



Agadir

DUNE
UNIQUE MATTERS

Roca



Agadir Agua 5.8"x5.8"

Agadir

Agadir, a series of tiles inspired by the miscellany of this Moroccan city, the richness of zellige and Berber crafts.





Agadir Selva 2.8"x11"



Agadir Lago 5.8"x5.8"





Agadir Niebla 2.8"x11"



Agadir

Glazed Porcelain

9mm   **2.8"x11"** **5.8"x5.8"**
7x28 cm 14.7x14.7 cm



Niebla



2.8"x11"



5.8"x5.8"



Niebla



5.8"x5.8"





Piedra



2.8"x11"



Piedra



5.8"x5.8"



9mm

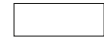


2.8"x11"
7x28 cm

5.8"x5.8"
14.7x14.7 cm



Agua



2.8"x11"



Agua



5.8"x5.8"



Agadir

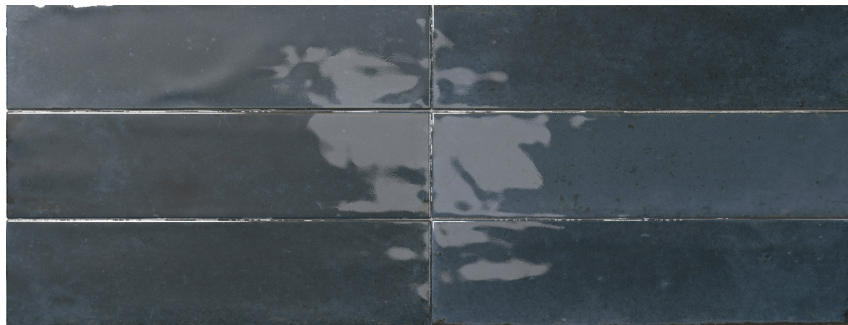
Glazed Porcelain

9mm

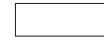


2.8"x11"
7x28 cm

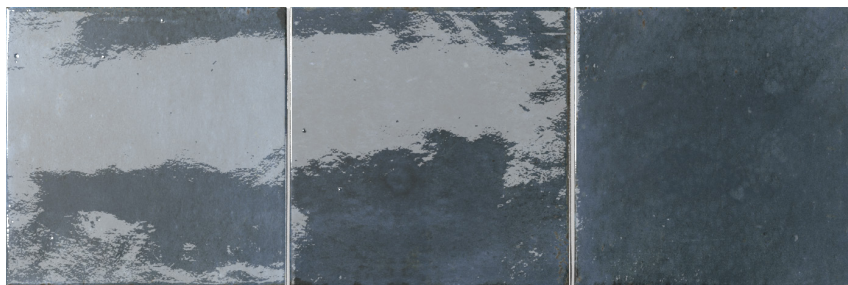
5.8"x5.8"
14.7x14.7 cm



Lago



2.8"x11"

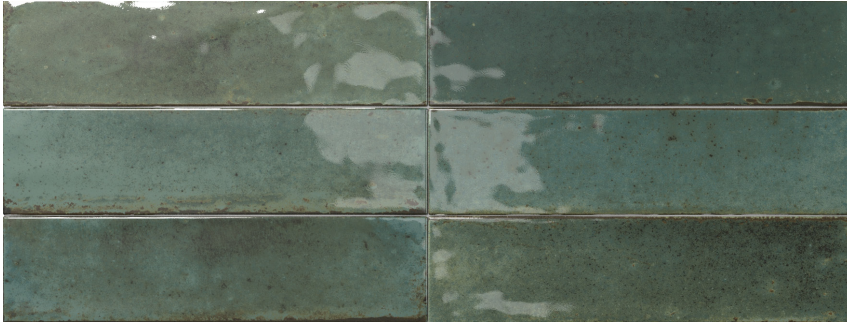


Lago

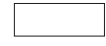


5.8"x5.8"





Selva



2.8"x11"



Selva



5.8"x5.8"




Agadir

Glazed Porcelain

9mm     **2.8"x11"** **5.8"x5.8"**
7x28 cm 14.7x14.7 cm



Lava


2.8"x11"



Technical Specifications 2.8"x11"

CHARACTERISTICS	STANDARD	DECLARED ASTM
Dimensions	ISO 10545-2	± 0.5%
Water Absorption	ISO 10545-3	≤0.5% < E ≤3%
Chemical Resistance	ISO 10545-13	GA
Flatness	ISO 10545-2	± 0.5%
Crazing Resistance	ISO 10545-11	Accomplish
Resistance to Stains	ISO 10545-14	5
Slip Resistance	41901 EX	Class 0
Frost Resistance	ISO 10545-12	Accomplish
Resistance to Thermal Shock	ISO 10545-9	Accomplish

Technical Specifications 5.8"x5.8"

CHARACTERISTICS	STANDARD	DECLARED ASTM
Dimensions	ISO 10545-2	± 0.5%
Water Absorption	ISO 10545-3	E ≤0.5%
Chemical Resistance	ISO 10545-13	GA
Flatness	ISO 10545-2	± 0.5%
Crazing Resistance	ISO 10545-11	Accomplish
Resistance to Stains	ISO 10545-14	5
Slip Resistance	41901 EX	Class 0
Frost Resistance	ISO 10545-12	Accomplish
Resistance to Thermal Shock	ISO 10545-9	Accomplish

Packaging Info

Size	SF per carton	PC per carton	BX per pallet
5.8"x5.8"	10.24	44	70
2.8"x11"	5.49	26	96